

Stock Tile Sizes & Finishes: *Honed:* 12 x 24 x 3/8
Sandblasted & Brushed: 18 x 36 x 5/8"
Tumbled: 18 x 30 x 1/2

Stock Slab: 1-1/4" or 2" *Call for available sizes **Quick Custom Slab Finishes:** Brushed, Bush-Hammered & Honed. Edge & finish detail also available. Inquire regarding the above options.

Usage: Commercial & Residential; Interior & Exterior applications, including Freeze/Thaw.

Custom: Sizes & finishes are subject to minimum quantity & lead time.

Variation: Tiles & slabs are cut from blocks extracted from quarries. Each block will vary. Pictures shown are representations ONLY. Sizes are approximate & may vary slightly with each order.

Stock: LA warehouse



Shown above: 6 x 12 x 3/4" in Flamed Wave (CUSTOM) finish.

Stock & Quick-Custom Finishes

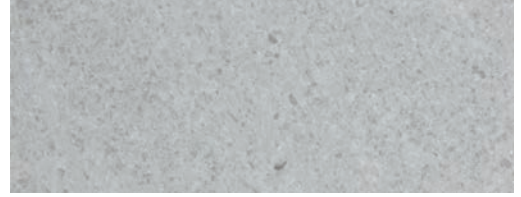
Limited to stock sizes. 100 sq ft min quantity. 2 week lead time. Includes Tumbled finish, shown below.



Brushed (quick-custom)



Sandblasted & Brushed (18x36x5/8)



Honed (12x24x3/8)



Bush-hammered (quick-custom)



Fine Sandblasted (quick-custom)



Polished (quick-custom)

Custom Finishes

500 sq ft min quantity. 10-12 week lead time.



Antique Sandblasted



Coarse Adze



Vertical Fine Adze



Split Face



Point Stalk



Shown above: 18 x 30 x 1/2" Tumbled.